

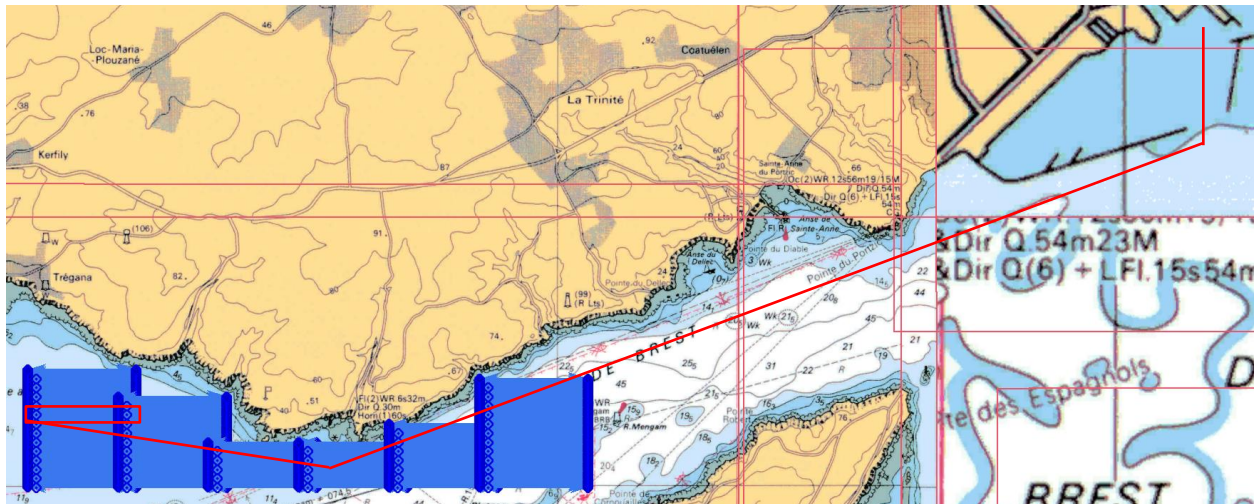
Boatbot Experiment #2 June 13th 2019

Objective

- Gather Magnetic, GPS-Data on Brique 9
- Redo Brique because of bad results in previous attempt

Area of Deployment

Brique 8 of search area for La Cordelière and way from and to harbour

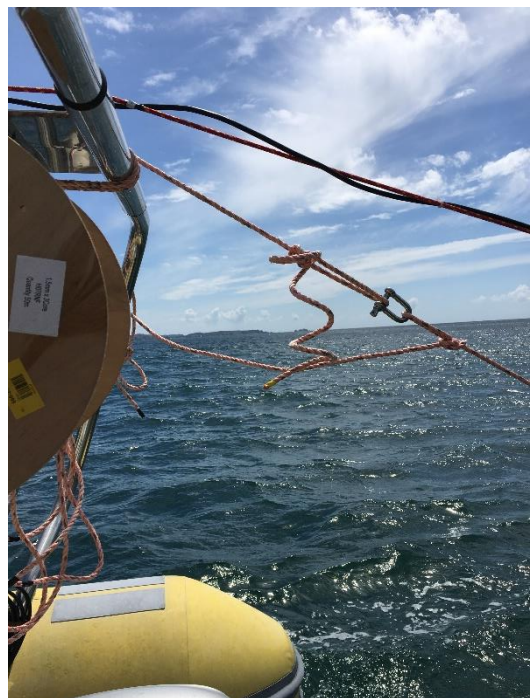


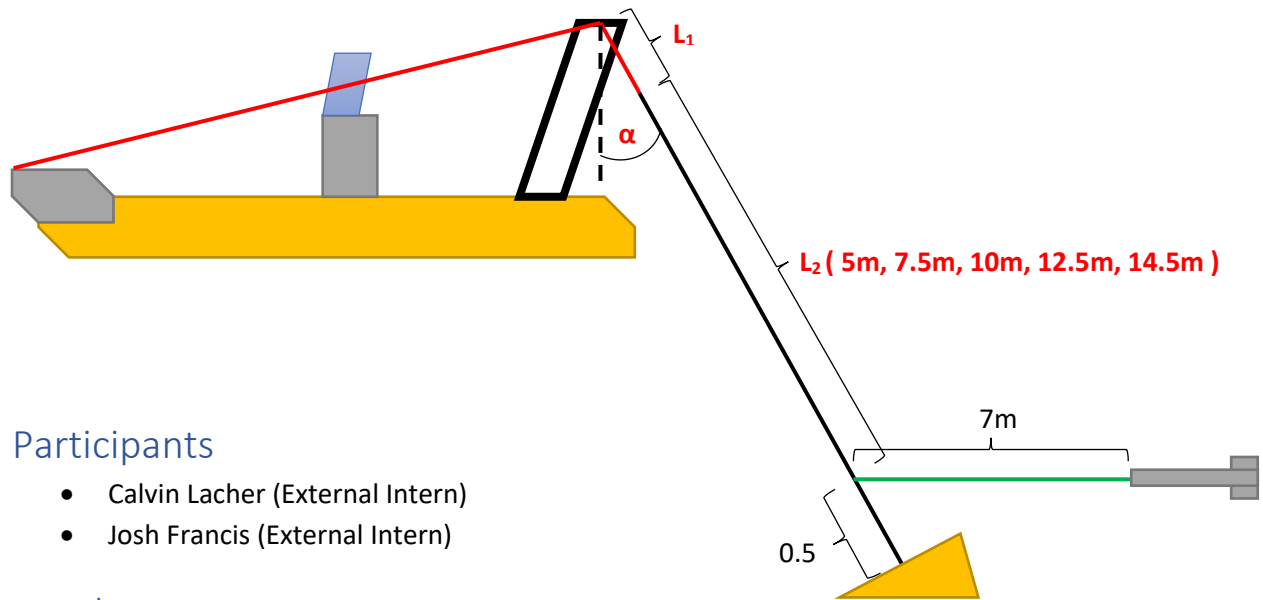
Maritime Weather

- Low to mid tide
- Currents towards East
- Calm Sea, no waves

Boatbot Setup

- L1 \approx 0.5m
- L2 = 12.5m
- $\alpha \approx 57^\circ$
- Big Controller Box
 - See config.yaml for controller setup
- Depressor
- Magnetometer
- IMU, GPS
- Navigation Computer (Boatbot)
- Data Computer (Hydro)





Participants

- Calvin Lacher (External Intern)
- Josh Francis (External Intern)

Results

- Brique 9 completed
 - Retrieved magnetic data
 - Retrieved GPS data
- Water depth: 18-19m
- Sensor Depth:
 - Magnetometer: ~ 7m
 - Depressor: ~ 7.5m

Problems

- Magnetometer Log had to be restarted because of an error in the A/D-converter