

**WELCOME
TO YOUR SCHOOL**



**CAMPUS MAP
& USEFUL INFO**

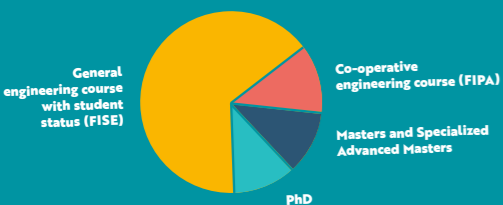
**FIRST DATES
FOR YOUR DIARY !**

- 1ST SEPTEMBER** > CAMPUS DISCOVERING DAY
- 22-24 SEPTEMBER** > WELCOME WEEKEND
- ONE FRIDAY OF EVERY MONTH** > IETA MILITARY ENGINEERING STUDENTS' FLAG-RAISING CEREMONY
- 3RD OCTOBER** > SPONSORSHIP CEREMONY
- 14 NOVEMBER** > DEMAIN'GÉNIEUR BUSINESS FORUM



SOME **1,000** STUDENTS ON CAMPUS

82% CIVIL ENGINEERING STUDENTS / 18% MILITARY ENGINEERING STUDENTS



246
STAFF MEMBERS

lecturers, research professors, engineers, technical teams and administrative staff

320
PART-TIME GUEST LECTURERS

Experts from the business world contribute to your education



The campus has full Wi-Fi coverage (including in the student residence).



The campus is also accessible to people with disabilities



With the ENSTABicyclette scheme, students can borrow bikes to use on campus



Defibrillator (at the warden's desk)

CAMPUS MAP



Easy!



ROOM NUMBERS
F 105

BUILDING FLOOR ROOM NUMBERS

FORMATION/ADMINISTRATION

- A** Office of the School Secretary
- B** Cafeteria • Media library
- C** Education Department • La Ruche



★ ENSTARTUPS Incubator



- F** Classrooms
- X** F011 : STOP DISCRI support centre

LECTURE THEATERS

- 1 Norbert Fargère
- 2 Sophie Germain
- 3 Louis Emile Bertin

- P** Executive Board
- Real Estate and Logistics Department
- Communications Department
- Quality Unit for a Sustainable Future
- ENSTA Bretagne Alumni

DSI **E** 005 (ground floor)

SOCIAL FACILITIES

- HA HB HC HD HE HF** Student Residence
- MDB** Student Unions
- X** Restaurant

SPORTS FACILITIES

To contact faculty or administrative staff members :

- @ prenom.nom@ensta-bretagne.fr
- Phone number : **+33 (0)2.98.34 + (...)**

EXECUTIVE BOARD

Bruno GRUSELLE, Director	P 111
Eric JAEGER, Deputy Director	P 110
Maryse TRÉVARIN, Chief of Staff (88 14)	P 112

EDUCATION

Education Director	
Rémy THIBAUD (88 69)	C 010
Studies & IETA Director	
Olivier CERVETTO (89 07)	C 029
Registrar services	
Magalie LE ROI (89 32)	C 012
Carine LÉON (87 24)	C 016
FIPA registrar services	
Céline QUIVOURON (88 17)	C 014

Support & guidance (acor@ensta-bretagne.fr)

Sylvie GUIDAL (88 63)	F 107 bis
Laurence GAUTIER (87 37)	F 10

Professionalization contract, business relations

Armelle GUIADER (88 48)	C 006
-------------------------	-------

International (mobility, etc.)

Johanna OGNON (87 30)	C 005
-----------------------	-------

Internships

Daniel JAUEN (87 70)	C 016 bis
----------------------	-----------

Timetables, planning

Catherine DELEN (87 72)	C 030
-------------------------	-------

Alexandre BRAUD (87 76)	C 030
-------------------------	-------

Grants, health insurance, supplementary health cover, etc.

Marie-Pierre CABON (FISE) (87 85)	A 103
-----------------------------------	-------

Christelle LE DUFF (FIPA, masters & mastères) (88 47)	A 104
---	-------

Registration with student forums

Adélaïde GAUDRON (87 01)	C 027
--------------------------	-------

Travel reimbursements

Geneviève GUEN (87 74)	A 010
------------------------	-------

ASSISTANCE, PREVENTION

Disability

Sylvie GUIDAL (86 63)	F 107 bis
-----------------------	-----------

STOP DISCRI > stopdiscri@ensta-bretagne.fr

Jeanne TOULOUSE (89 57)	F 007
-------------------------	-------

Pierre-Etienne BOUCHER-CHAPUY (88 35)	C 008
---------------------------------------	-------

Prevention

Magalie LE ROI (89 32)	C 012
------------------------	-------

IT support	E 005
------------	-------

Intern : 13 - Extern : (89 16)

helpdesk_dsi@ensta-bretagne.fr

Social assistance

(on-duty on Thursday mornings from 8.30am to 12pm)

Muriel NIGER	
--------------	--

muriel.niger@intradef.gouv.fr	A 101 Bis
--	-----------

RDE, Résidence des élèves (accommodation on site)

Catherine DE CASTRO VIEIRA (88 02 / 88 85)	P 005
--	-------

helpdesk_st@ensta-bretagne.fr	P 004
--	-------

Warden's desk

Wardens (88 00)	Reception
-----------------	-----------

AS WELL AS...

Communications > com@ensta-bretagne.fr

Ingrid LE TOUTOUZE (88 51)	P 109
----------------------------	-------

Entrepreneurship, business incubator

Maryline BESNARD (87 80)	C 009
--------------------------	-------

Quality Unit for a Sustainable Future

Ludovic BOT (89 43)	P 106
---------------------	-------

ENSTA Bretagne alumni association

Anne-Laure MAREC (87 29)	P 009
--------------------------	-------

Student Union : Amaury, President	MDE
--	-----

bde@ensta-bretagne.org

GET OFF TO A GOOD START

DOCUMENTS TO READ

- Internal regulations
- Tuition regulations
- Disability guide
- «Bien sur mon campus» (Feeling at Home on Campus) leaflet (fighting against discrimination and sexual and gender-based violence)
- For residents: Student residence (RDE) regulations

Find out more at: ensta-bretagne.fr

1

WHERE CAN YOU FIND INFORMATION?

INTRANET ensta-bretagne.fr/user/login

Procedures, organization and the latest news at the school: sign in to the intranet with your credentials (first letters of your last name and first 2 letters of your first name) to be able to view the relevant pages and documents.

Need IT support?
Send an email to helpdesk_dsi@ensta-bretagne.fr

2



YOUR STUDIES

Find all the modules on Moodle: moodle.ensta-bretagne.fr

The timetable and grades can be accessed on Aurion: formation.ensta-bretagne.fr or the «My ensta Bretagne» app (which can be downloaded for free on iOS and Android).

3



STUDENT CARD

HANDY AND ESSENTIAL

The ENSTA Bretagne card is your student card, which you will use to access the campus, pay at the university cafeteria, take media library documents out, etc.



4

“BIEN SUR MON CAMPUS” (FEELING AT HOME ON CAMPUS)

Feeling at home on campus is about adopting a zero-tolerance approach to bullying, discrimination and violence. But it is also about being able to talk about it and receive guidance in the knowledge that any report will be dealt with, if you are a victim. At ENSTA Bretagne, you can count on our full support to raise awareness, prevent and provide practical help in this matter that concerns all of us.

Online reporting platform

5



INTERNATIONAL, INTERNSHIP & CO-OPERATIVE EDUCATION

ENSTA Bretagne's International, Careers & Innovation Hub, La Ruche, supports you in your mobility projects (internship or academic exchange), your relations with business (internship, co-operative education) and your new business formation ideas. **Come and pay us a visit!**

laruche@ensta-bretagne.fr

Offices C003-C009 | Building C



10

OP UP YOUR CAFETERIA CARD

Download the **TIMECHEF** app (which can be downloaded for free on iOS and Android) or sign in to timechef.fr

9



CAFETERIA

For students, the average cost of a full meal served at the school's cafeteria is €3.70

(price may vary depending on the dishes chosen).

OPENING HOURS

Mondays to Fridays*,
Breakfast*: 7.30am-9am
Lunch: 11.45am-1.30pm
Supper*: 6.45pm-7.30pm
Saturdays, Sundays
and bank holidays*:
Breakfast: 8.30am-9.30am
Lunch: 12pm-1pm
Supper: 6.45pm-7.30pm



8

* for residents only
** except school vacation periods

7



ACCOMMODATION

Located in the social facilities of the campus, the student residence (RDE) is composed of 6 buildings.



UNDER RENOVATION

These buildings will be transformed one by one from 2023 to 2027.

Assistance for residents :
+33 (0)2 98 34 88 02 ou 88 85 - Bureau
helpdesk_st@ensta-bretagne.fr

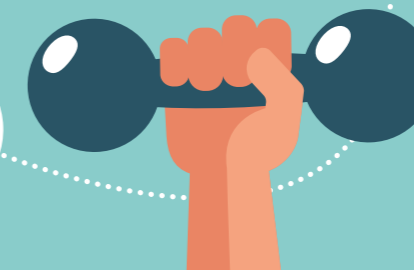
SPORTS

The sports association runs an extensive choice of sports, at recreational and competitive level alike.

A wide variety of sports tournaments are held annually, including the Tournoi Sportif des Grandes Écoles de la Défense (TSGED) and Championnat universitaire (FFSU).

as@ensta-bretagne.org

14



ENSTARTUPS

INNOVATION & ENTREPRENEURSHIP

The ENSTARTUPS business incubator has a twofold purpose: hosting project leaders and training engineering students in how to go about setting up a business.

enstartups@ensta-bretagne.fr

Office C009 | Building C



11

STUDENT UNION AND STUDENT CLUBS

The Student Union (BDE)
Elected by the students, the team organizes a wide range of activities all year round for a thriving social scene outside your studies.

bde@ensta-bretagne.fr

Clubs & associations:
Are you looking forward to an exciting and bustling student life? Come and find out about our clubs & associations and join our dynamic, dedicated teams!



12

13

THE FOY'Z

THE STUDENTS' COMMON ROOM
at ENSTA Bretagne, nicknamed «the Foy'z» and managed by students, is the beating heart of our student community!

DAYTIME
Pool, table football, large sofas ... this is the ideal place for chilling out with friends.

AT NIGHT
All sorts of themed evening events are organized. The Foy'z is open at various intervals through the day, between 8am and midnight.



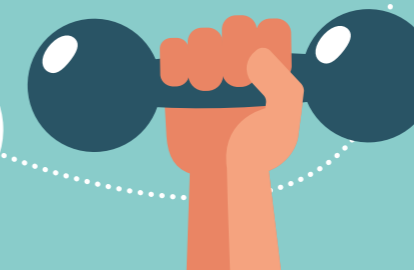
SPORTS

The sports association runs an extensive choice of sports, at recreational and competitive level alike.

A wide variety of sports tournaments are held annually, including the Tournoi Sportif des Grandes Écoles de la Défense (TSGED) and Championnat universitaire (FFSU).

as@ensta-bretagne.org

14



LIVING AND STUDYING IN BREST

With over 30,000 students throughout the city of Brest, it is abuzz with entertainment all year round! Check out the cultural, sporting, scientific and maritime agenda to see what's on!

brest.fr

15



HAVE A GREAT START TO THE NEW ACADEMIC YEAR!