

**WELCOME  
TO YOUR SCHOOL**



**CAMPUS MAP  
& USEFUL INFO**

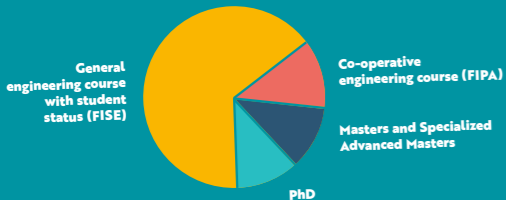
**FIRST DATES  
FOR YOUR DIARY !**

- 1<sup>ST</sup> SEPTEMBER** > CAMPUS DISCOVERING DAY
- 22-24 SEPTEMBER** > WELCOME WEEKEND
- ONE FRIDAY OF EVERY MONTH** > IETA MILITARY ENGINEERING STUDENTS' FLAG-RAISING CEREMONY
- 3<sup>RD</sup> OCTOBER** > SPONSORSHIP CEREMONY
- 14 NOVEMBER** > DEMAIN'GÉNIEUR BUSINESS FORUM



SOME **1,000** STUDENTS ON CAMPUS

**82% CIVIL ENGINEERING STUDENTS / 18% MILITARY ENGINEERING STUDENTS**



**246**

STAFF MEMBERS

lecturers, research professors, engineers, technical teams and administrative staff

**320**

PART-TIME GUEST LECTURERS

Experts from the business world contribute to your education



The campus has full Wi-Fi coverage (including in the student residence).



The campus is also accessible to people with disabilities

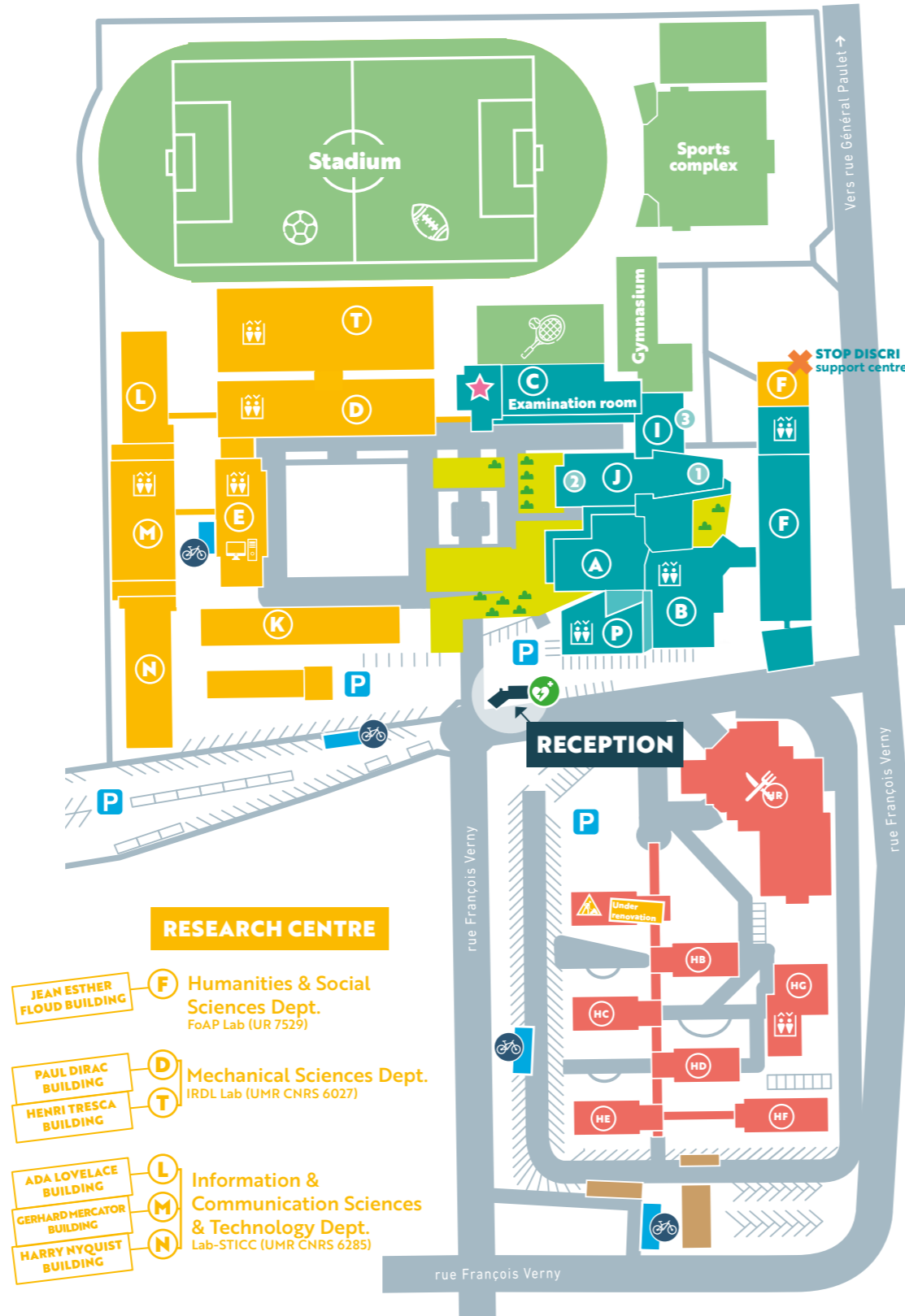


With the ENSTABicyclette scheme, students can borrow bikes to use on campus



Defibrillator (at the warden's desk)

# CAMPUS MAP



**Easy!**



**ROOM NUMBERS**  
**F 105**

BUILDING FLOOR ROOM NUMBERS

**FORMATION/ADMINISTRATION**

- A** Office of the School Secretary
- B** Cafeteria • Media library
- C** Education Department • La Ruche



★ ENSTARTUPS Incubator



- F** Classrooms
- X** F011 : STOP DISCRI support centre

**LECTURE THEATERS**

- 1 Norbert Fargère
- 2 Sophie Germain
- 3 Louis Emile Bertin

- P** Executive Board
- Real Estate and Logistics Department
- Communications Department
- Quality Unit for a Sustainable Future
- ENSTA Bretagne Alumni

**DSI** **E** 005 (ground floor)

**SOCIAL FACILITIES**

- HA HB HC HD HE HF Student Residence
- MDB Student Unions
- ✂ Restaurant

**SPORTS FACILITIES**

To contact faculty or administrative staff members :

@ [prenom.nom@ensta-bretagne.fr](mailto:prenom.nom@ensta-bretagne.fr)

Phone number : +33 (0)2.98.34 + (...)

**EXECUTIVE BOARD**

- Bruno GRUSELLE, Director ..... P 111
- Eric JAEGER, Deputy Director ..... P 110
- Maryse TRÉVARIN, Chief of Staff (88 14) ..... P 112

**EDUCATION**

- Education Director**
- Rémy THIBAUD (88 69) ..... C 010
- Studies & IETA Director**
- Olivier CERVETTO (89 07) ..... C 029
- Registrar services**
- Magalie LE ROI (89 32) ..... C 012
- Carine LÉON (87 24) ..... C 015
- Stéphanie VAUTHIER (88 31) ..... C 016
- FIPA registrar services**
- Céline QUIVOURON (88 17) ..... C 014

**Support & guidance** (acor@ensta-bretagne.fr)

Sylvie GUIDAL (88 63) ..... F 107 bis

Laurence GAUTIER (87 37) ..... F 10

**Professionalization contract, business relations**

Armelle GUIADER(88 48) ..... C 008

**International (mobility, etc.)**

Johanna OGON (87 30) ..... C 006

**Internships**

Daniel JAOUEN (87 70) ..... C 016 bis

**Timetables, planning**

Catherine DELEN (87 72) ..... C 030

Alexandre BRAUD (87 76) ..... C 030

**Grants, health insurance, supplementary health cover, etc.**

Marie-Pierre CABON (FISE) (87 85) ..... A 103

Christelle LE DUFF (FIPA, masters & mastères) (88 47) ..... A 104

**TOEIC registration**

Florence THOMAS (88 10) ..... F 132

**Registration with student forums**

Adélaïde GAUDRON (87 01) ..... C 027

**Travel reimbursements**

Geneviève GUEN (87 74) ..... A 010

**ASSISTANCE, PREVENTION**

**Disability**

Sylvie GUIDAL (86 63) ..... F 107 bis

**STOP DISCRI** > stopdiscri@ensta-bretagne.fr

Jeanne TOULOUSE (89 57) ..... F 007

Pierre-Etienne BOUCHER-CHAPUY (88 35) ..... P 106

**Prevention**

Magalie LE ROI (89 32) ..... C 012

**IT support**

Intern : 13 • Extern : (89 16)

helpdesk\_dsi@ensta-bretagne.fr

**Social assistance**

(on-duty on Thursday mornings from 8.30am to 12pm)

Muriel NIGER

muriel.niger@intradef.gouv.fr ..... A 101 Bis

**RDE, Résidence des élèves (accomodation on site)**

Catherine DE CASTRO VIEIRA (88 02 / 88 85) ..... P 005

helpdesk\_st@ensta-bretagne.fr ..... P 004

**Warden's desk**

Wardens (88 00) ..... Reception

**AS WELL AS...**

**Communications** > com@ensta-bretagne.fr

Ingrid LE TOUTOUZE (88 51) ..... P 109

**Entrepreneurship, business incubator**

Maryline BESNARD (87 80) ..... C 009

**Quality Unit for a Sustainable Future**

Ludovic BOT (89 43) ..... P 106

**ENSTA Bretagne alumni association**

Anne-Laure MAREC (87 29) ..... P 009

**Student Union : Amaury, President** ..... MDE

bde@ensta-bretagne.org

# GET OFF TO A GOOD START

## DOCUMENTS TO READ

- Internal regulations
- Tuition regulations
- Disability guide
- «Bien sur mon campus» (Feeling at Home on Campus) leaflet (fighting against discrimination and sexual and gender-based violence)
- For residents: Student residence (RDE) regulations

Find out more at: [ensta-bretagne.fr](http://ensta-bretagne.fr)

1

# WHERE CAN YOU FIND INFORMATION?

**INTRANET** [ensta-bretagne.fr/user/login](http://ensta-bretagne.fr/user/login)

**Procedures, organization and the latest news at the school:** sign in to the intranet with your credentials (first letters of your last name and first 2 letters of your first name) to be able to view the relevant pages and documents.

**Need IT support?**  
Send an email to [helpdesk\\_dsi@ensta-bretagne.fr](mailto:helpdesk_dsi@ensta-bretagne.fr)

2



# YOUR STUDIES

Find all the modules on Moodle: [moodle.ensta-bretagne.fr](http://moodle.ensta-bretagne.fr)

*The timetable and grades can be accessed on Aurion: [formation.ensta-bretagne.fr](http://formation.ensta-bretagne.fr) or the «My ensta Bretagne» app (which can be downloaded for free on iOS and Android).*

3



# STUDENT CARD

**HANDY AND ESSENTIAL**

The ENSTA Bretagne card is your student card, which you will use to access the campus, pay at the university cafeteria, take media library documents out, etc.



4

# “BIEN SUR MON CAMPUS” (FEELING AT HOME ON CAMPUS)

Feeling at home on campus is about adopting a zero-tolerance approach to bullying, discrimination and violence. But it is also about being able to talk about it and receive guidance in the knowledge that any report will be dealt with, if you are a victim. At ENSTA Bretagne, you can count on our full support to raise awareness, prevent and provide practical help in this matter that concerns all of us.

Online reporting platform

5



# INTERNATIONAL, INTERNSHIP & CO-OPERATIVE EDUCATION

ENSTA Bretagne's International, Careers & Innovation Hub, La Ruche, supports you in your mobility projects (internship or academic exchange), your relations with business (internship, co-operative education) and your new business formation ideas. **Come and pay us a visit!**

[laruche@ensta-bretagne.fr](mailto:laruche@ensta-bretagne.fr)

Offices C003-C009 | Building C



10

# OP UP YOUR CAFETERIA CARD

Sign in to <https://www.popandpay2.com/register>

Site : ENSTA29  
ID : First 6 numbers after the 0, under your studentcard's barcode.



9

# CAFETERIA

For students, the average cost of a full meal served at the school's cafeteria is €3.70

(price may vary depending on the dishes chosen).

## OPENING HOURS

Mondays to Fridays\*,  
Breakfast\*: 7.30am-9am  
Lunch: 11.45am-1.30pm  
Supper\*: 6.45pm-7.30pm  
Saturdays, Sundays  
and bank holidays\*:  
Breakfast: 8.30am-9.30am  
Lunch: 12pm-1pm  
Supper: 6.45pm-7.30pm



8

\* for residents only  
\*\* except school vacation periods

7



# ACCOMMODATION

Located in the social facilities of the campus, the student residence (RDE) is composed of 6 buildings.

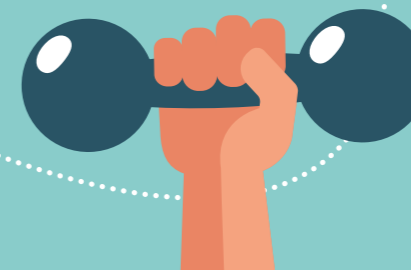


## UNDER RENOVATION

These buildings will be transformed one by one from 2023 to 2027.

Assistance for residents :  
+33 (0)2 98 34 88 02 ou 88 85 - Bureau  
[helpdesk\\_st@ensta-bretagne.fr](mailto:helpdesk_st@ensta-bretagne.fr)

14



6

# MEDIA LIBRARY

An essential tool supporting the education of engineers which is open to all, the media library contains more than

12,000 publications in paper and digital format, more than 5,000 e-journals and 150 printed journals.

At the media library, you can use its 3 group study rooms, its computers, its 1 all-in-one printer, and Wi-Fi.

## B BUILDING

Open Mondays to Wednesdays from 8am to 7pm,  
Thursdays from 10am to 7pm  
and Fridays from 8am to 5.45pm.  
During the school holidays:  
Mondays to Fridays > 8am-12pm / 1pm-4.45pm

# ENSTARTUPS

L'INCUBATEUR ENSTA BRETAGNE

# INNOVATION & ENTREPRENEURSHIP

The ENSTARTUPS business incubator has a twofold purpose: hosting project leaders and training engineering students in how to go about setting up a business.

[enstartups@ensta-bretagne.fr](mailto:enstartups@ensta-bretagne.fr)

Office C009 | Building C



11

# STUDENT UNION AND STUDENT CLUBS

**The Student Union (BDE)**  
Elected by the students, the team organizes a wide range of activities all year round for a thriving social scene outside your studies.

[bde@ensta-bretagne.fr](mailto:bde@ensta-bretagne.fr)

**Clubs & associations:**  
Are you looking forward to an exciting and bustling student life? Come and find out about our clubs & associations and join our dynamic, dedicated teams!



12

13

# THE FOY'Z

**THE STUDENTS' COMMON ROOM**  
at ENSTA Bretagne, nicknamed «the Foy'z» and managed by students, is the beating heart of our student community!

**DAYTIME**  
Pool, table football, large sofas ... this is the ideal place for chilling out with friends.

**AT NIGHT**  
All sorts of themed evening events are organized. The Foy'z is open at various intervals through the day, between 8am and midnight.



# SPORTS

The sports association runs an extensive choice of sports, at recreational and competitive level alike.

A wide variety of sports tournaments are held annually, including the Tournoi Sportif des Grandes Écoles de la Défense (TSGED) and Championnat universitaire (FFSU).

[as@ensta-bretagne.org](mailto:as@ensta-bretagne.org)

# BREST LIFE

# LIVING AND STUDYING IN BREST

With over 30,000 students throughout the city of Brest, it is abuzz with entertainment all year round!

Check out the cultural, sporting, scientific and maritime agenda to see what's on!

[brest.fr](http://brest.fr)



15

HAVE A GREAT START TO THE NEW ACADEMIC YEAR!